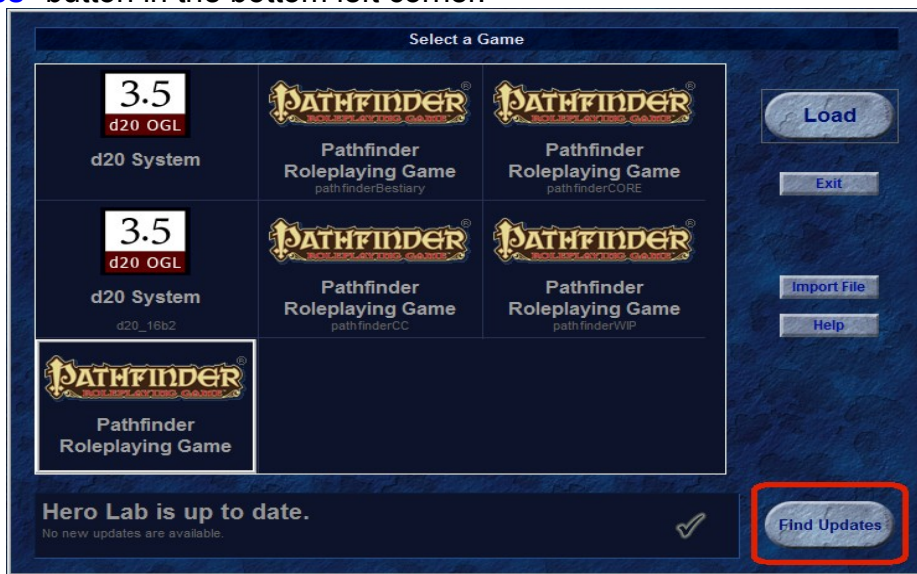
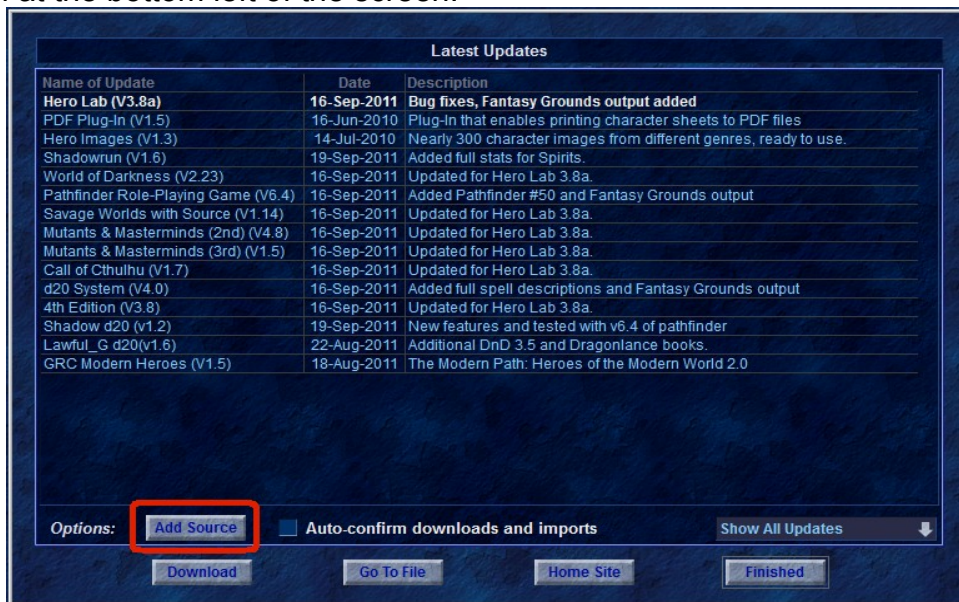


This document goes over how to setup your automatic download of the community created data sets. Doing the following steps will allow you to get updates from the Hero Lab community just like how you get official updates from Hero Lab. This feature is called the *Secondary Update URL* and is very easy to use.

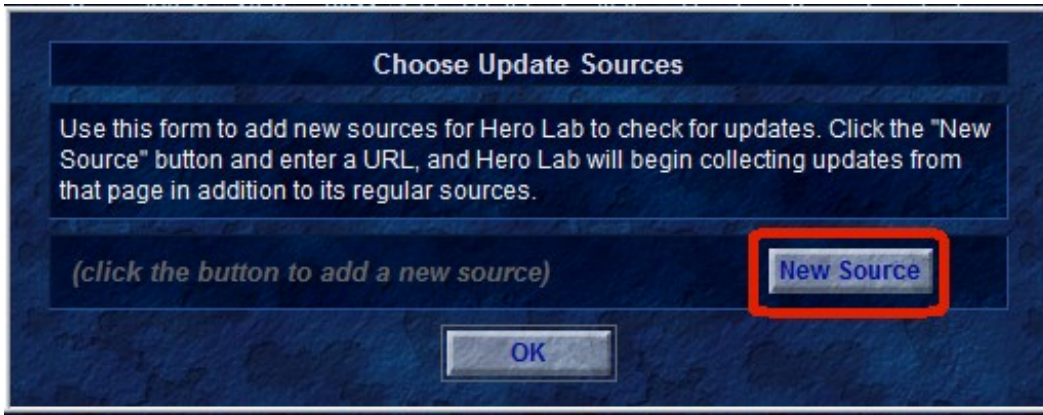
1. Start Hero Lab software and at the “**Select a Game**” window click on the “**Find Updates**” button in the bottom left corner.



2. A new window will now open called “**Latest Updates**”. Click on the “**Add Source**” button at the bottom left of the screen.



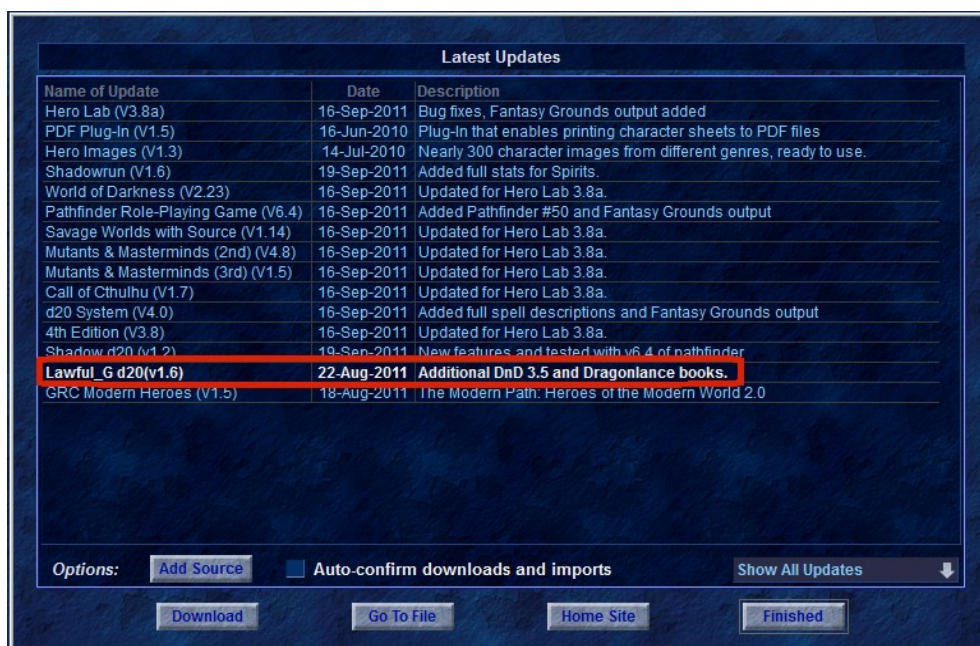
3. A new window called “Choose Update Sources” will open. Press the “New Source” button.



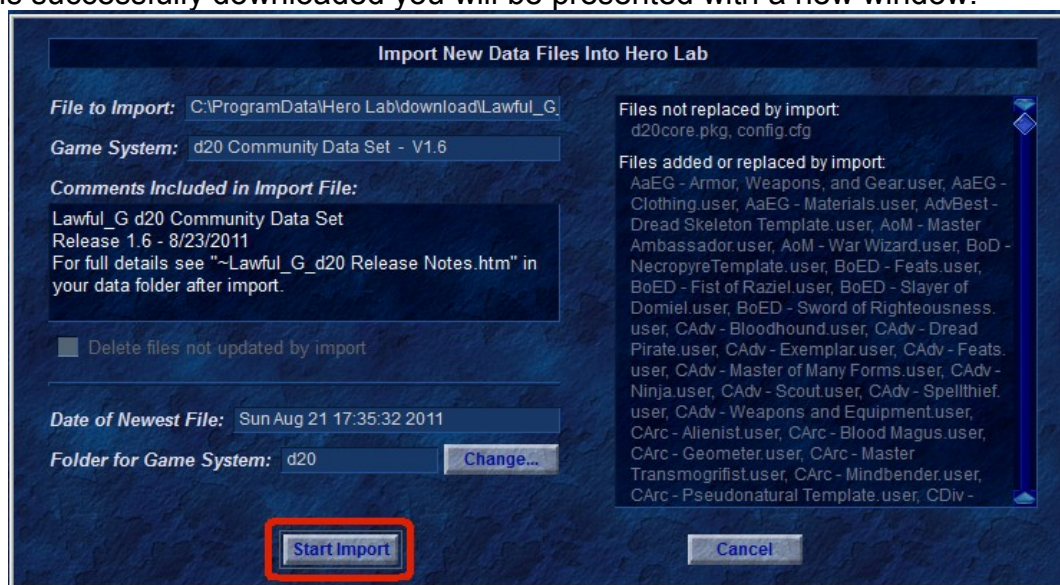
4. In the new window type in the full URL of where you would like to check for updates. The URL has to end in some type of .xml document
 - a) For the d20 Community Project (aka *Lawful_G d20*) use the following URL:
 1. <http://www.cheeseweasel.net/herolab/updates.xml>



5. Press the blue **OK** button and press the blue **OK** button again to get past the information message.
6. To activate this new feature you ***MUST*** restart Hero Lab.
7. On the first screen where you can select different Games press the blue button on the right marked “**Find Updates**” which will then show this window:

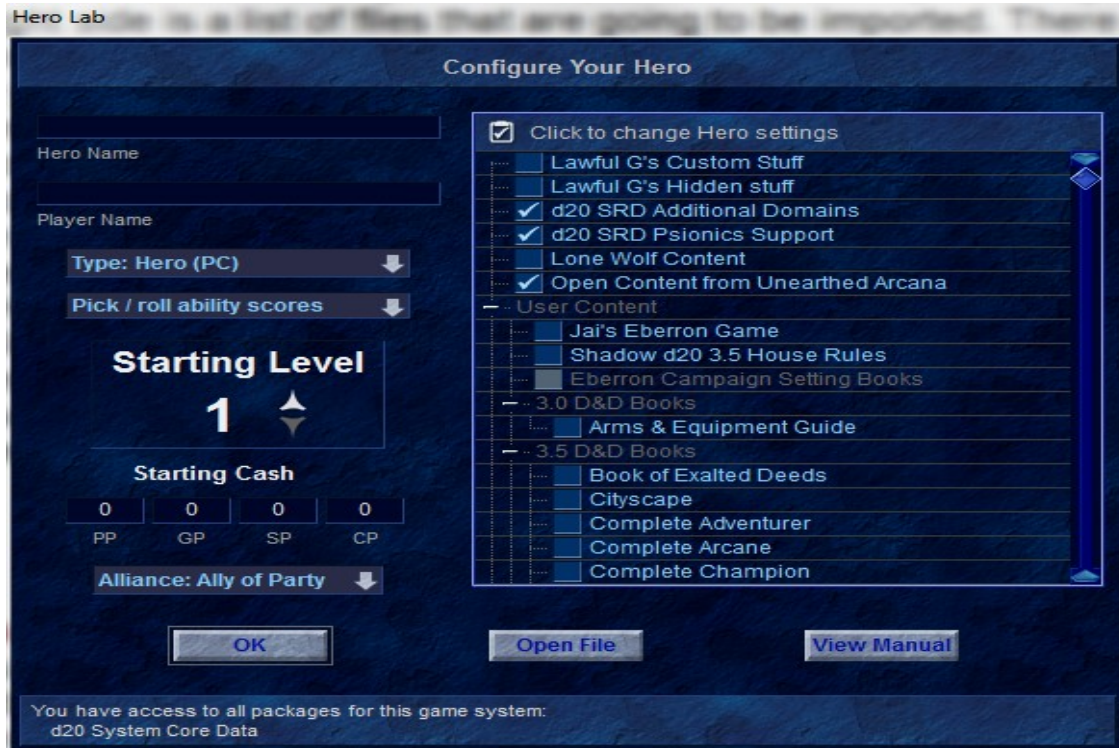


8. On this new window you will now see an updated named “**Lawful_g d20(vX.XX)**”. This name will change slightly over time as we release new versions to the community. Click on this update and click the blue “**Download**” button to start the download. Once it is successfully downloaded you will be presented with a new window:



9. This new window shows you information about the import that you are about to do. On the right side is a list of files that are going to be imported. There are comments to let you know some of the highlights for what was changed or added with this update.
- a) If you wish to install into the default directory, which in this case is **d20**, you can simply click the blue button marked “**Start Import**” at this time to finish the install. If you have need to install into a different directory please see the very end of this document.

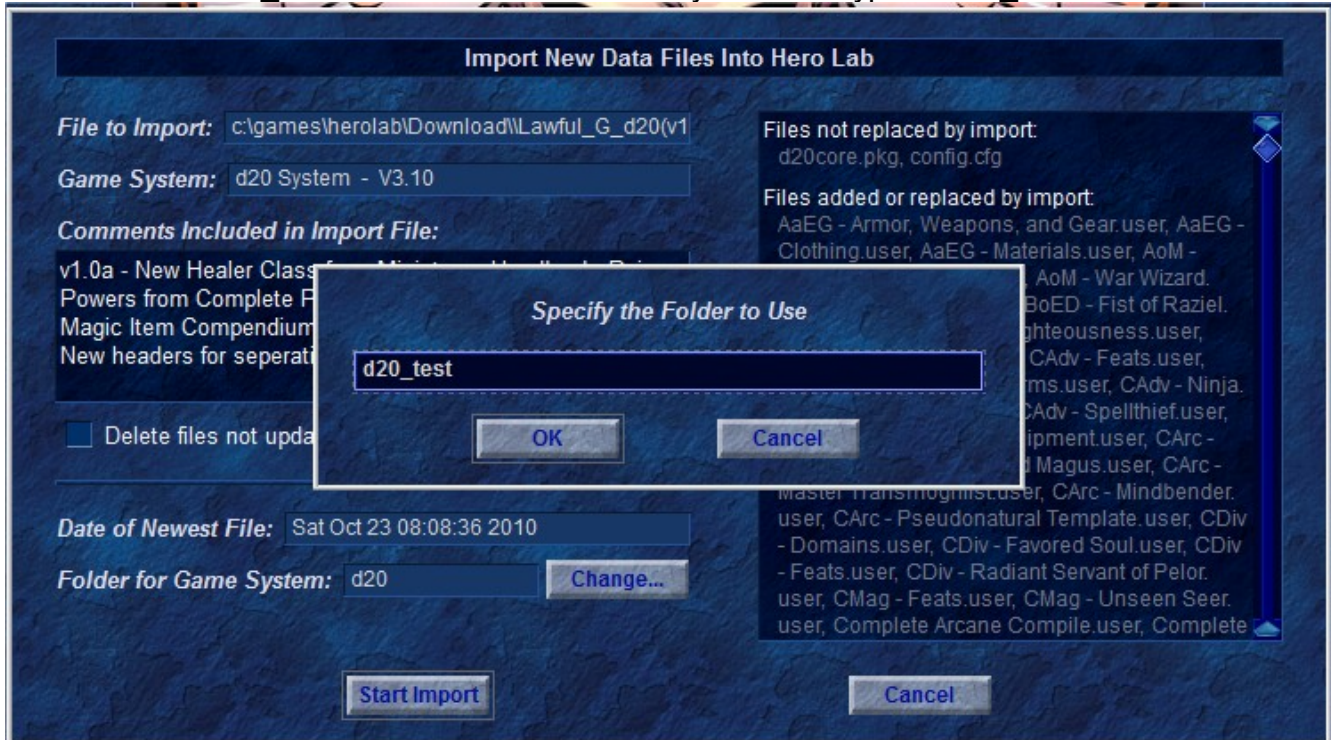
10. Once installed you can start the **d20** game like normal.
11. In the first window called “Configure Your Hero” you will now see a large number of new Hero Settings. This includes new Headers for Eberron Campaign Setting Books, 3.0 D&D Books, 3.5 D&D Books, Dragonlance Setting Books, and Forgotten Realms Setting Books.



12. To use any of these books simply place a check mark next to the book to activate its contents for your character.

This step is only if you wish to install into a different directory

1. If you wish to install into a different game directory then you will need to click on the blue button marked “**Changed...**”. you will presented with a new small window that will let you type in the name of the folder. For example you have a test d20 game folder named d20_test. So in the small window you would type in d20_test.



- a) Press the blue “**OK**” button and then press the blue button marked “**Start Import**” to do the import into your custom game folder.

Updates:

- Documented updated in accordance with HL v3.8a changes.